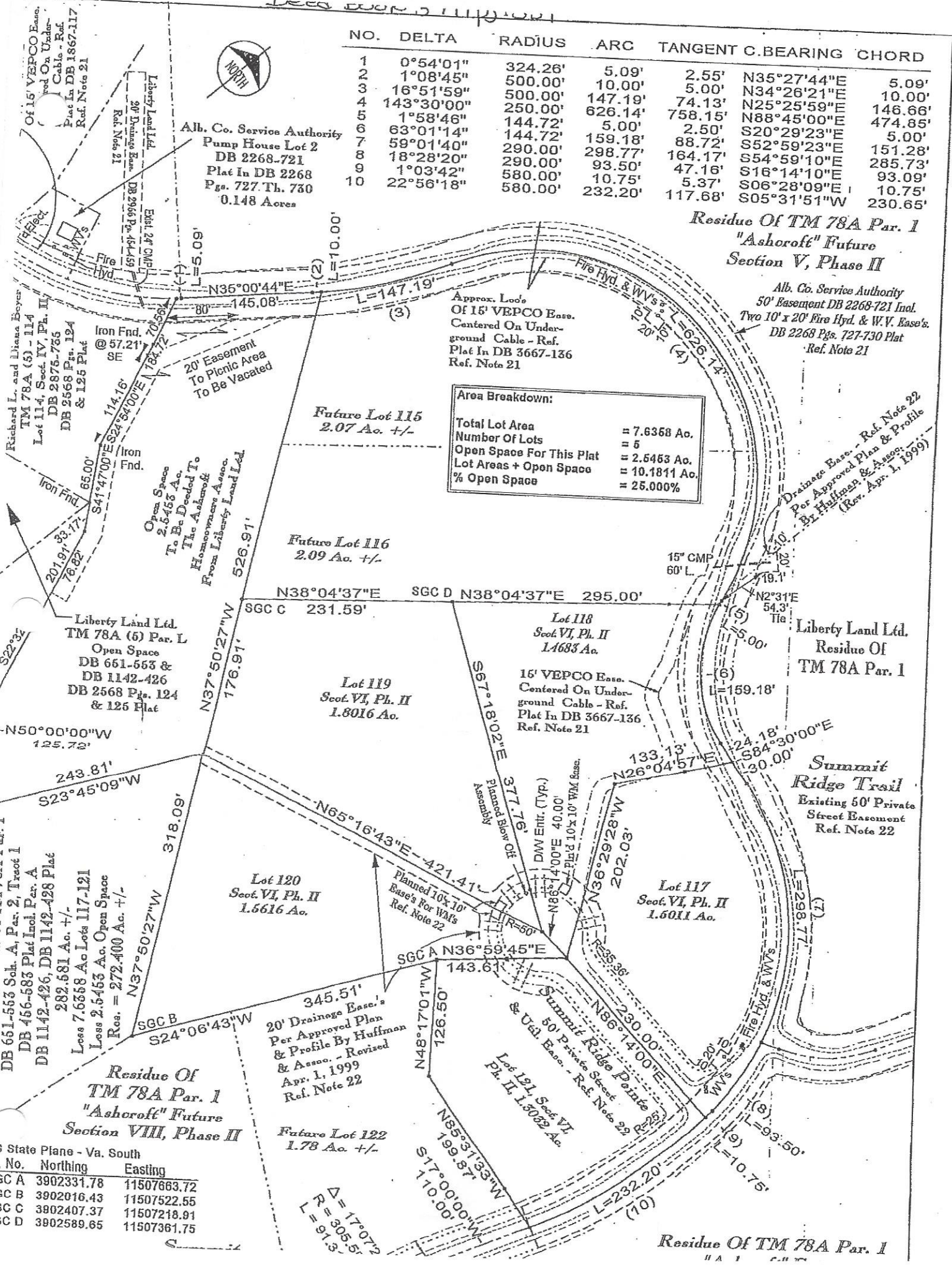




NO.	DELTA	RADIUS	ARC	TANGENT	C. BEARING	CHORD
1	0°54'01"	324.26'	5.09'	2.55'	N35°27'44"E	5.09'
2	1°08'45"	500.00'	10.00'	5.00'	N34°26'21"E	10.00'
3	16°51'59"	500.00'	147.19'	74.13'	N25°25'59"E	146.66'
4	143°30'00"	250.00'	626.14'	758.15'	N88°45'00"E	474.85'
5	1°58'46"	144.72'	5.00'	2.50'	S20°29'23"E	5.00'
6	63°01'14"	144.72'	159.18'	88.72'	S52°59'23"E	151.28'
7	59°01'40"	290.00'	298.77'	164.17'	S54°59'10"E	285.73'
8	18°28'20"	290.00'	93.50'	47.16'	S16°14'10"E	93.09'
9	1°03'42"	580.00'	10.75'	5.37'	S06°28'09"E	10.75'
10	22°56'18"	580.00'	232.20'	117.68'	S05°31'51"W	230.65'



Area Breakdown:	
Total Lot Area	= 7.6368 Ac.
Number Of Lots	= 5
Open Space For This Plat	= 2.5463 Ac.
Lot Areas + Open Space	= 10.1811 Ac.
% Open Space	= 25.000%

US State Plane - Va. South

Pl. No.	Northing	Eastng
SGC A	3902331.78	11507663.72
SGC B	3902016.43	11507522.55
SGC C	3902407.37	11507218.91
SGC D	3902589.65	11507361.75

Residue Of TM 78A Par. I